

EDGECORE WEB-SMART ECS2020 SERIES

RELIABLE, AFFORDABLE, AND SIMPLE MANAGED SWITCH SOLUTION
FOR SMALL AND MEDIUM SIZED BUSINESSES



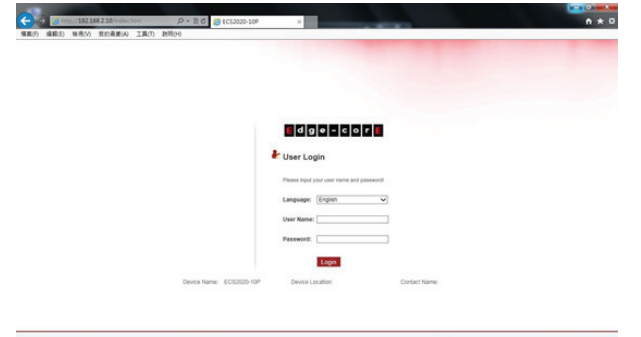
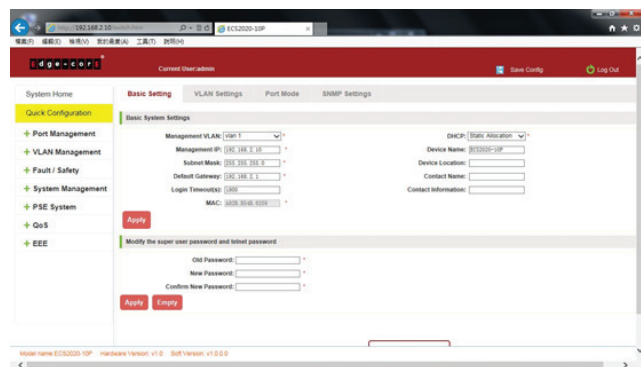
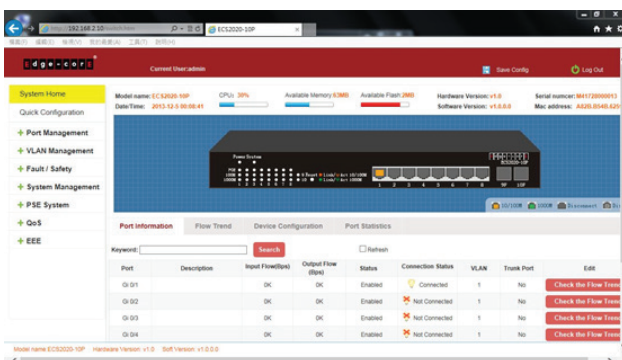
Latest Generation Cost-effective Web-Smart Switch Solution Innovate Switching Solutions to be SMART and EASY – ECS2020 Series

The ECS2020 is designed for SMB and enterprise markets and provides a complete solution from 10/28-ports, including both non-PoE and PoE options. The switches comply with the IEEE 802.3az Energy Efficient Ethernet standard. Support for IPv4 and IPv6 management and features ensures your network can upgrade from IPv4 to IPv6.

The ECS2020 Series offers complete PoE solutions from 70 W to 190 W. All the switches are rack mountable. The ECS2020-10P is a fanless design PoE switch that supports up to 4 ports at 15.4 W, or 2 ports at 30 W to meet the increasing power demands of users. The ECS2020-28P delivers a default 190 W of PoE power to support future IP cameras, IP telephones, or access points.

Quick configuration and Multi-language

The ECS2020 Series is managed via clean and easy-manage interface which allows network engineers or SMB office managers to perform the limited configuration and monitoring steps required for the network. Meanwhile, the ECS2020 series supports multiple languages (TW/CN/English) which enables all users to easily operate the switch.



Performance and Scalability

The ECS2020 Series is a range of web-smart switches designed for the SMB market. The switches can be deployed in different target network topologies, from small to large. Besides powerful software features, the switches provide a complete solution including both non-PoE and PoE options.

Multi Management & Comprehensive QoS

- Supports Web, SNMP v1/v2c/v3, and Telnet management to provide CLI access. The switch supports a private MIB for detailed information.
- Supports management functions through both IPv4 and IPv6
- Eight egress queues per port enables differentiated management of up to eight traffic types
- Traffic is prioritized according to 802.1p or DSCP, giving optimal performance to real-time applications such as voice and video.

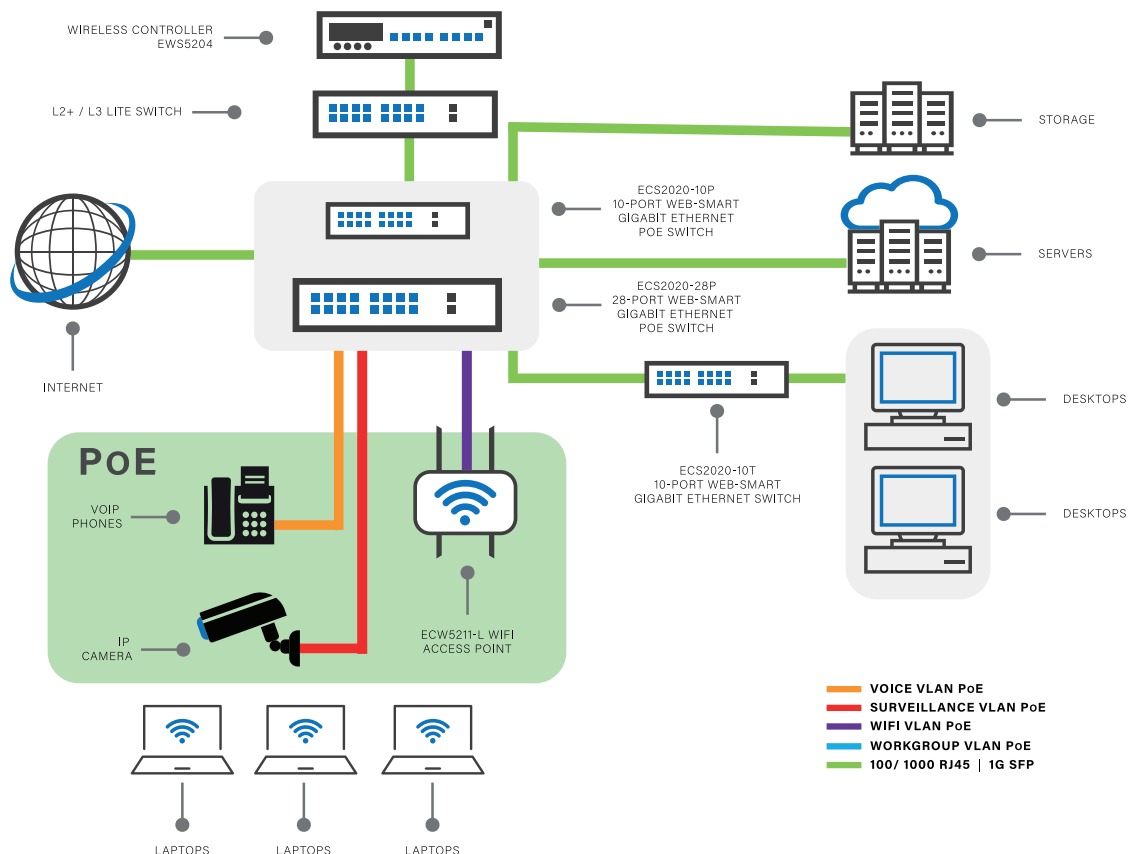
Enhanced Security

- Port Security allows access to a switch port based on MAC address. This limits the total number of devices from using a switch port and protects from MAC flooding attacks.
- IEEE 802.1X port-based access control ensures all users are authorized before being granted access to the network. User authentication is carried out using a standards-based RADIUS server.
- Access Control Lists (ACLs) restrict access to sensitive network resources by denying packets based on source and destination MAC addresses, IP addresses, and TCP/UDP ports. ACLs are hardware supported, so switching performance is not compromised.
- Secure Shell (SSH) and Secure Sockets Layer (SSL/HTTPS) encrypts Telnet and web access to the switch, providing secure network management.
- DHCP snooping provides security by filtering un-trusted DHCP messages and by building and maintaining a DHCP snooping binding table.
- Dynamic VLAN assignment for user authentication and location-independent access to the network.

Smart Network Deployment & Solid Hardware Design

- Voice/Surveillance VLAN for quick deployment of VoIP, and automatic Video VLAN to help deploy your IP-based surveillance system.
- Provides 4KV surge protection on Ethernet ports, which can prevent damage to the network caused by power surges and lightning strikes to meet specific environment needs.
- Operate at a temperature from 0-50°C. The ECS2020-28P includes cooling fans, whereas the ECS2020-10T/10P/28T are fanless designs.

Application



ECS2020 Series Feature Matrix Table

Cost-effective Web-Smart Switch Solution



| Product Model | ECS2020-10T | ECS2020-28T | ECS2020-10P | ECS2020-28P | |
|----------------------|--------------------------------------|---|---|---|---|
| Port | RJ-45 10/100/1000 Ports | 8 | 24 | 8 | 24 |
| | 100/1000 SFP Ports | 2 (1G) | 4 (1G) | 2 (1G) | 4 (1G) |
| | PoE Ports | No | No | 8 | 24 |
| | Console Port | No | No | No | No |
| Performance | Switching Capacity | 20 Gbps | 56 Gbps | 20 Gbps | 56 Gbps |
| | Forwarding Rate | 14.9 Mpps | 41.7 Mpps | 14.9 Mpps | 41.7 Mpps |
| | Flash Memory | 16 MB | 16 MB | 16 MB | 16 MB |
| | DRAM | 128 MB | 128 MB | 128 MB | 128 MB |
| | MTBF | 324,089 hrs | 149,992 hrs | 118,824 hrs | 83,923 hrs |
| | Packet Buffer | 4.1 Mbits | 4.1 Mbits | 4.1 Mbits | 4.1 Mbits |
| | MAC Address Table | 8 K | 8 K | 8 K | 8 K |
| | Jumbo Frames | 10 K | 10 K | 10 K | 10 K |
| | Heat Dissipation | 27.297 (Btu/H) | 59.34 (Btu/H) | 267.95 (Btu/H) | 657.83 (Btu/H) |
| | Acoustic Noise | 0 dB (A) | 0 dB (A) | 0 dB (A) | <40 dB |
| Power Supply | 100-240 VAC, 50-60 Hz | Yes | Yes | Yes | Yes |
| | Max System Power Consumption (Watts) | 8.03 W | 18.9 W | 80 W | 210.2 W |
| PoE | IEEE 802.3af/802.3at | - | - | Yes | Yes |
| | PoE Power Budget | - | - | 70 W | 190 W |
| | PoE Timer | - | - | Yes | Yes |
| Mechanical | Rack Space | 9" | 19" | 13" | 19" |
| | Form Factor | Rackmount | Rackmount | Rackmount | Rackmount |
| | Dimension (W x D x H) | 21.6 x 13.3 x 4.2 cm (8.5x 5.2 x 1.6 in) | 44.0 x 20.8 x 4.4 cm (17.3 x 8.2 x 1.7 in) | 29.4 x 18.0 x 4.4 cm (11.6 x 7.0 x 1.7 in) | 44.0 x 20.8 x 4.4 cm (17.3 x 8.2 x 1.7 in) |
| | Weight | 814 g (1.81 lb) | 2.4 kg (5.29 lb) | 2.0 kg (4.4 lb) | 4.5 kg (9.9 lb) |
| Environmental | Operating Temperature | 0 ~ 50°C | 0 ~ 50°C | 0 ~ 50°C | 0 ~ 50°C |
| | Storage Temperature | -40 ~ 70°C | -40 ~ 70°C | -40 ~ 70°C | -40 ~ 70°C |
| | Altitude | 3000 m | 3000 m | 3000 m | 3000 m |
| | Operating Humidity (non-condensing) | 10% to 90% | 10% to 90% | 10% to 90% | 10% to 90% |
| | Storage Humidity (non-condensing) | 10% to 90% | 10% to 90% | 10% to 90% | 10% to 90% |
| Certification | CE/FCC | Yes | Yes | Yes | Yes |
| | UL/BSMI | Yes | Yes | Yes | Yes |
| | Safety Compliance: CB | Yes | Yes | Yes | Yes |



Additional information : Email: sales@edge-core.com
Tel: +886-3-563-8888 | +1-949-336-6801 (Irvine,CA)

© 2022 Edgecore Networks. All rights reserved.
The information contained herein is subject to change without notice. This document is for informational purposes only and does not set forth any warranty, expressed or implied, concerning any equipment, equipment feature, or service offered by Edgecore Networks Corporation. Edgecore Networks Corporation shall not be liable for technical or editorial errors or omissions contained herein.